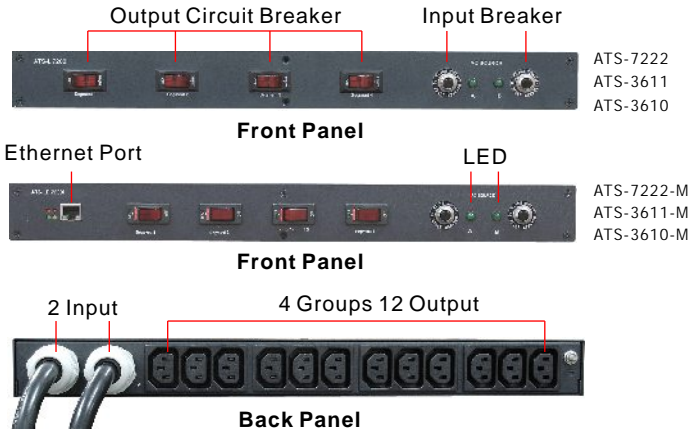


ATS

Automatic Transfer Switch



Outlook



Functions

When Critical Equipment Demands Continuous Power Availability

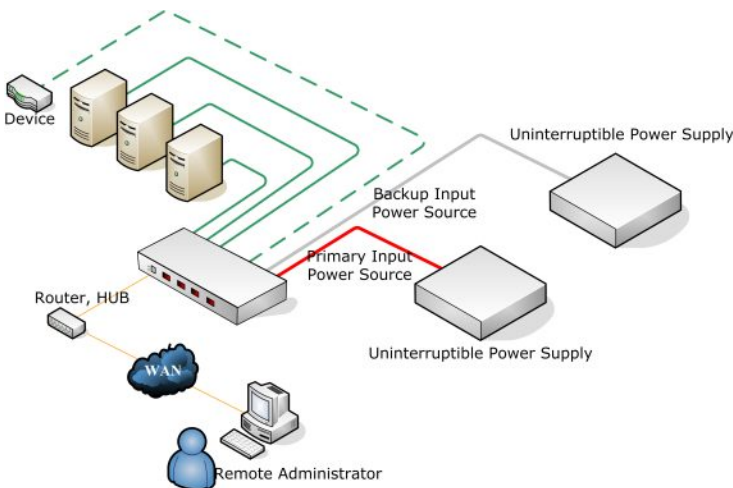
The EPOWER Automatic Transfer Switch is designed to support mission-critical network and communications equipment where downtime is not an option — and space is at a premium. Its small package and installation flexibility are ideal for high density applications such as equipment racks and enclosures. It provides reliable, redundant AC power — supplied by the customer facility — to critical connected load.

Two Power Sources, One Great Solution

The ATS is a dual input, rackmountable power distribution unit (PDU) with a built in automatic transfer switch. The Micro SmartSwitch is capable of receiving power from two independent AC power sources and utilizes a built-in automatic AC transfer switch to quickly switch between them. This provides AC power line redundancy to critical computer or communications equipment in a rack environment.

The ATS is designed to be mounted in a "1U" configuration within a rack, allowing it to be used in a wide variety of applications.

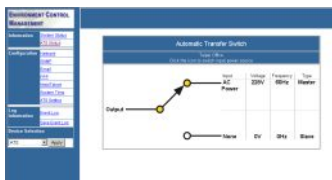
Diagram



Grouped Receptacles and Circuit Breaker protection

The ATS provides twelve receptacles, protected against output short circuits by four breakers, and is capable of supporting 24A distributed across its output for distribution to the connected loads. Input power to the ATS is supplied by two attached 12-foot cords, each terminating with a NEMA L6-30 plug to connect to utility power or to an uninterruptible power supply (UPS) system. LED indicators on the front panel indicate whether utility power is being supplied by the primary source phase "A" or the secondary source phase "B."

Software Interface



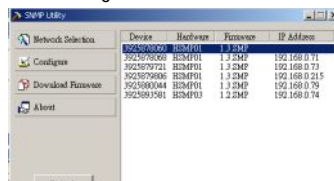
ATS Management



Event Log



SNMP Management



SNMP Utility

Build-in Network Module

The LE series ATS also is build-in network module. It can provide both of the power source information and notify administrator when the power source transfer is triggered.

EPOWER Power Management Technology

1. Centralized power management for various server platforms and heterogeneous power devices.
2. Ultra flexibility, Console/Manager/Agent three layers management.
3. Support various brands of UPS and battery management.
4. Support various server platforms to safely shutdown and start the critical network server and storage devices.

EPOWER
POWER ON DEMAND

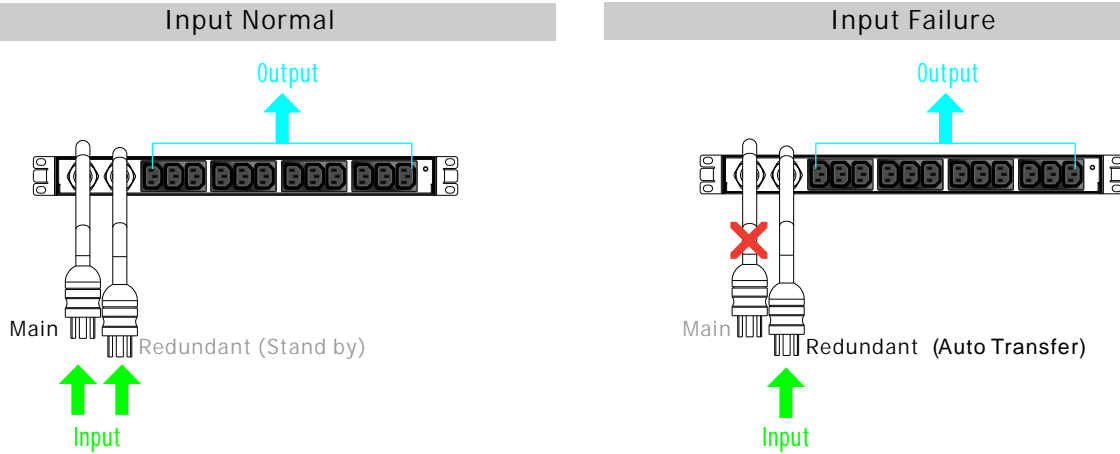
A web page is an appliance™

ATS

Automatic Transfer Switch



Work Mode



Specification

Model name	ATS-7222	ATS-7222-M	ATS-3611	ATS-3611-M	ATS-3610	ATS-3610-M
General						
Dimensions (HxWxD)	44x432x216 mm 1.75x17x8.5 inches					
Weight	3.2 kg 7 lbs					
Electrical input						
Nominal input voltage range	200 to 240 VAC		110 to 130 VAC		90 to 110 VAC	
On-line voltage range	180 to 262 VAC		100 to 143 VAC		80 to 133 VAC	
Input frequency	50/60 HZ					
Input plug	(2) attached 12 ft. cords with NEMA L6-30 plugs		(2) attached 12 ft. cords with NEMA L5-30 plugs			
Input protection	Circuit breaker 2 x 30A					
Input surge rating	800 Joules					
Electrical output						
Output receptacles	(12) IEC 320-C13 (4 segments)					
Output protection	Circuit breaker 4 x 10A		Circuit breaker 4 x 15A			
Output power rating	5760 VA		2880 VA			
Maximum output current	24 A					
Detection and transfer time	50Hz < 20 ms; 60Hz < 18ms					
Transfer time	50Hz < 10 ms; 60Hz < 8ms					
Communications						
SNMP Card (RJ45 port)	No	Yes	No	Yes	No	Yes
Environmental						
Operating temperature	10 to 50 deg. C					
Storage temperature	-30 to 60 deg. C					
Relative humidity	10% to 80%; non-condensing					
Operating altitude	0 to 3,000 M (10,000 ft) above sea level					

EPOWER
POWER ON DEMAND

Digipower Manufacturing Inc.
9F, No. 75, Sec. 1, Shin Tai Wu
Road, Shijr City, Taipei.
<http://www.digipower.com.tw>
Tel : 02 - 26988618
Fax : 02 - 26988610